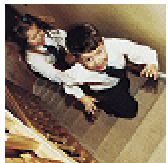




# Participation

A person centered approach....



John Shaw; Strategic Commissioner for  
Children with additional needs

Kate Sandel; Commissioning Officer for  
Transitions

# Why ?

- To meet with government policy?
- To make people feel that they are being involved?
- Because it looks good?

Or

- Because you want people involved in designing and providing the right services to meet their needs?
- People feel ownership of services and that they have a say in what happens to them.

# Who might participate?

- Young people
- Parents/carers
- Families
- Practitioners
- Providers
- Who else....?



# Participation or Consultation?

- Before you try to involve people you need to ask



Why you want people to participate?



Are they empowered to do so?

# A spectrum of participation

- Young people with no or very limited communication and very complex needs

To

- A young person who is able to communicate and confident to do so; empowered and skilled to participate- may sit on youth councils, run their own projects , report to the Children's Trust etc...



# What are the barriers to participation?



# Devon's Strategic Commitment



## Devon Children's Trust Partnership

### Devon Children and Young Peoples Plan

- Key Activity in developing the Devon Aiming High for Disabled Children Action Plan
- Integrated Strategy with Adult and Community Services DCC/PCT
- Case Transfer protocols for young people with complex needs
- Work the Job Centre Plus, Connexions and the Voluntary sector to identify pathway for vulnerable young people in Transition to Adulthood

# Transition Strategy

- 2006/7 – Commissioning programme looking at Transitions – Contract with Young Devon to facilitate a programme
- 2008 Appointed Strategic Commissioner Integrated Inclusion Strategies
- 2008 – Appointed a Commissioning Officer for Transitions in Joint Commissioning Unit
- 2008 – Signed off phase 1 Transition Strategy identifying a staged process for engagement with all adult service sectors through pathway development – LD, AMH, Older people and Physical Disabilities Services.
- 2009 – Joint ACS CYPS Commissioning group – Transitions /Personalisation , Person Centred Planning

# Multi agency participation

- Multi agency working
- Joint agency teams for children with special needs, health and social care since 2001
- Integrated Children's Provider Service
  - Social care, CAMHS, community nursing, therapy services, County Special Education Team, portage, public health nursing . Area teams covering Devon, each have transitions leads.

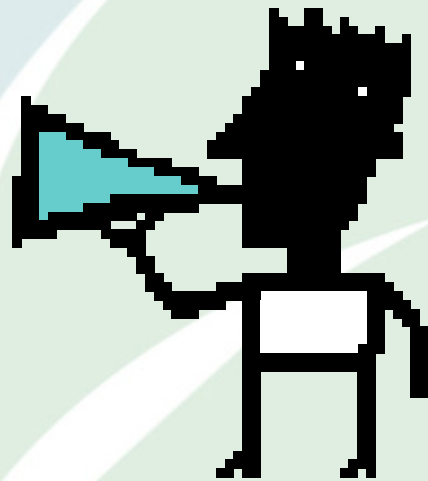
- Young People in Transitions Meetings. (YPIT) meetings.
  - Regular transition meetings with adult services managers.
  - Managing lists of all children aged 14+ within transition arrangements.
  - Now to be driven by outcomes of person centred plans

# Some ways to participate....

- Training young people to sit on interview panels, inspect services, report to commissioning boards.
- Shadow panels or representatives on Children's trust boards etc
- Apprenticeship schemes for young people



- Young people and their families leading training and workshops
- Advocates supporting young people and their families to participate and have their voices heard



# What have we been doing?

---

- Person centred planning as a tool for individual participation and consultation
- Advocacy service, both for individual participation at reviews etc, and strategically.
- Asking the experts to do it for us-E.g the voluntary sector, schools, and the youth service
- Young commissioners
- Parent/carer conversation events
- Parent/carer forums

# Person centred planning

- Participation for all
- Ensures young people participate in their own reviews
- Means young people participate in service planning and delivery



# Core Promise

- Reviews and action plans
- One page profile
- Communication chart
- Decision making tool
- Home school agreement



# A person centred review

- It makes the young person the key participant in that review. It gives them a voice
- Good preparation is essential
- Accessible format
- Venue and style to suit the young person
- They can participate in a way that meets their needs-this may mean an advocate is more appropriate than them being present.
- It gives permissions-the young person can see everyone coming together

# A one page profile

---

- What we like and admire about them
- What is important to them
- What is important for them
- What they need to stay healthy and safe
  
- It allows them to participate even when they cannot be physically present.
- It can represent their views and wishes and ensures they are involved in decisions about their lives.

# A communication chart

- Enables people to learn how young person communicates and how to communicate with them
- Gives voice and allows child to be heard
- Fundamental human right
- Leads to decision making
- Enables the young person to participate by ensuring they are understood

# Decision making tool

- Assumes the young person has a right to be involved in decisions
- Establishes who will participate in decision making and when
- Conflict management tool, and establishes partnerships.
- Learning about choices, preferences and decisions in the context of social responsibility
- Informs the curriculum

# Home/school agreement

- Individualised service level agreement
- Makes everyone's participation is equal, young person, school, home.
- Provides history
- Gives insight into what is important to families
- Tightens up the way we work – provides link between reviews, profiles etc
- Creates opportunity for respectful challenge and dialogue
- Leads to accountability
- Risk management

# Advocacy

- For all young people with a statement of special educational need aged 14-17
- Supports young people to be prepared for their reviews, and ensures their voice is central.
- Empowers them to have their own voice, and encourages active participation



# Participating strategically

- These tools give us a huge amount of information about what works and what doesn't, and what is important for the future for some of our most hard to reach young people and their families.
- Capturing this information is incredibly valuable information for strategic commissioners and service managers

# Childrens' Trust

- Devon Children's Trust endorsement for person centred planning approach for ALL children with additional needs, not just those in transition.
- Next steps-to design a tool kit appropriate for all reviews.
- Develop mechanisms to extract individual, local, and strategic information from each plan

# Some questions to ask....

- Be specific...why do you want to involve people and what might the potential outcomes be?
- How will you make it useful to the person participating?
- Can you use it to consult as well as involve?
- Have you got a strategic commitment and the mechanisms to respond to the participation of young people and their families?
- Are there people already doing this work that can support and help you?